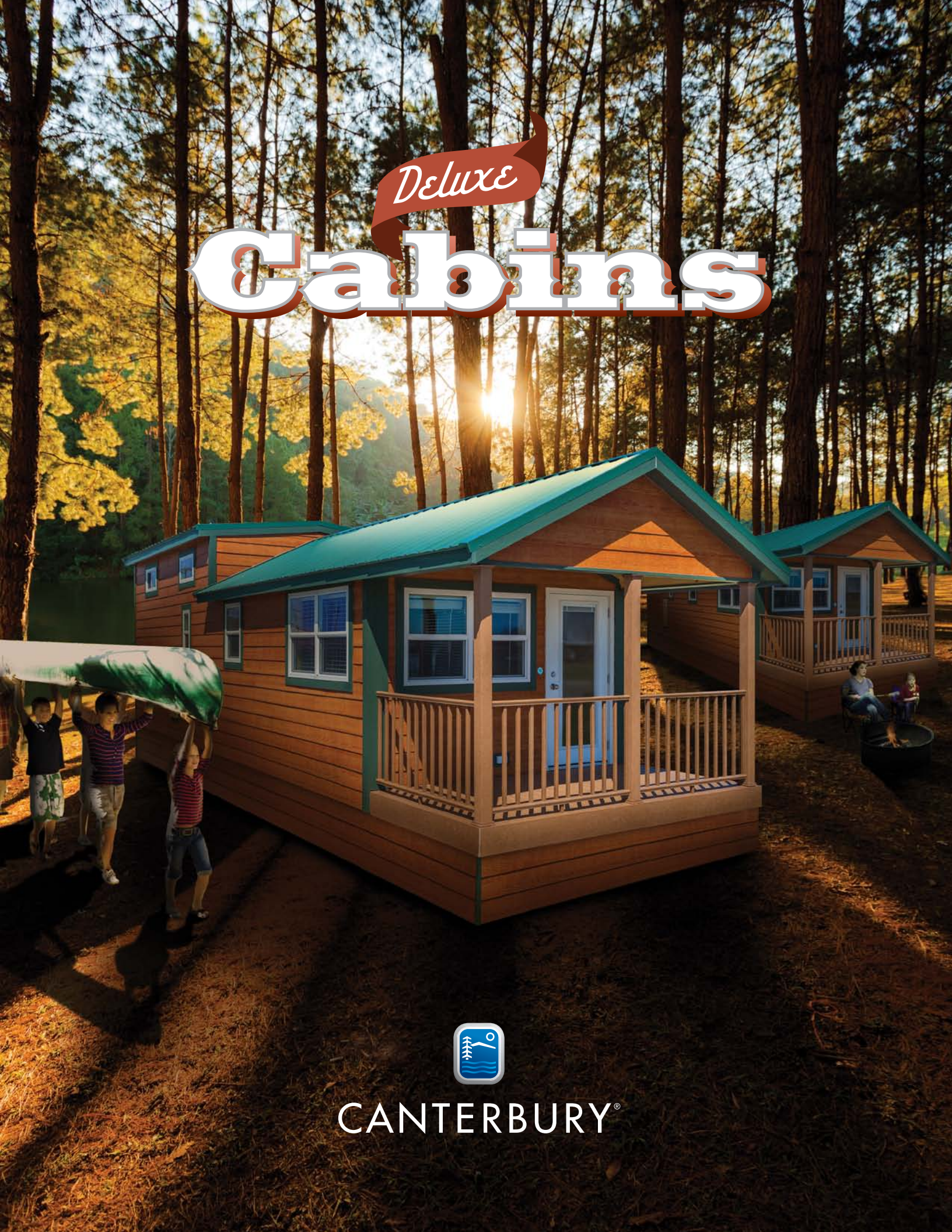


*Deluxe*  
**Cabins**



CANTERBURY®

*Redefine* the

**GETAWAY**

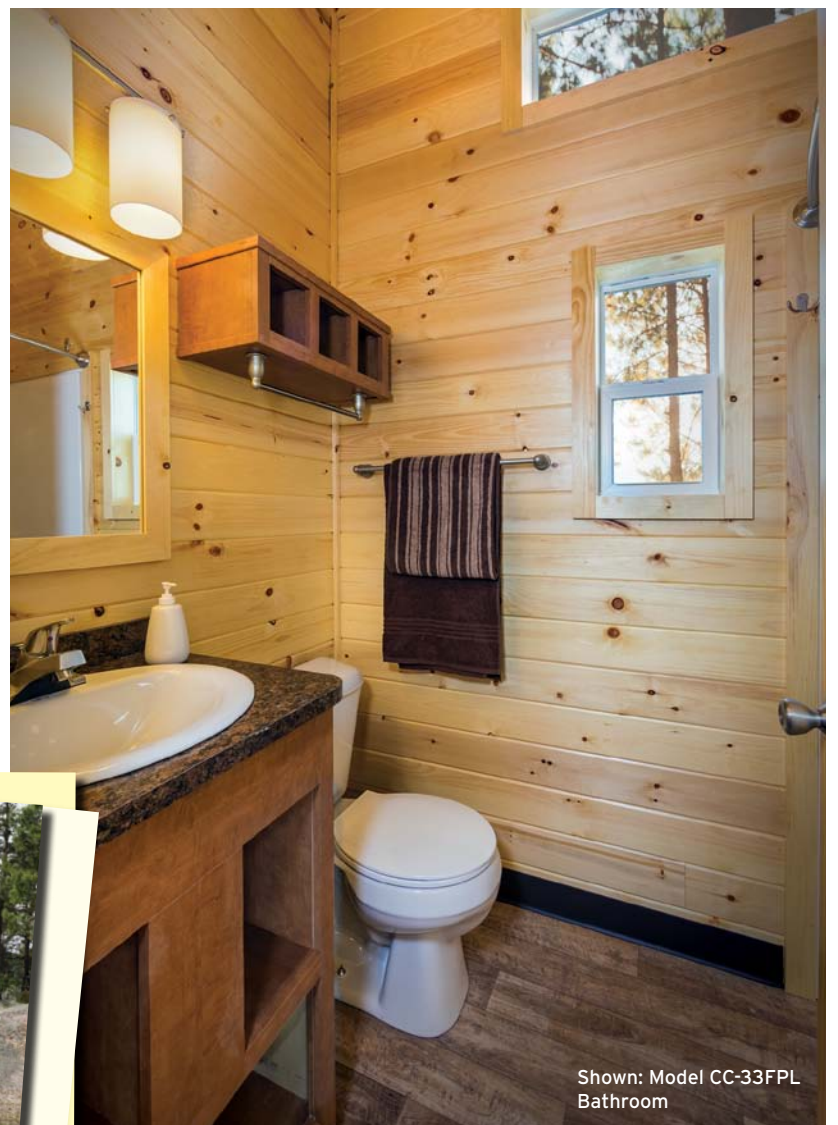


**For more than 30 years**, Canterbury has been building high-quality havens and has extended its expertise to include building cabins for campground owners across America. The quality and workmanship that goes into every cabin is unmatched in the industry. We have developed cabins that fit any need, including front porches, side entrances and wheelchair-accessible cabins to name a few. If the standard cabin does not meet the needs of your campground, Canterbury will custom design the perfect floor plan for you or your organization.

Shown: Model CC-33FPL  
Kitchen/Living area



Shown: Model CC-33FPL  
Bedroom



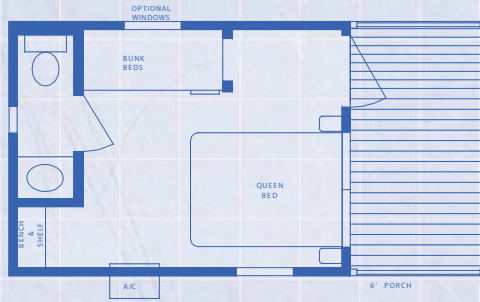
Shown: Model CC-33FPL  
Bathroom



# Floor Plans

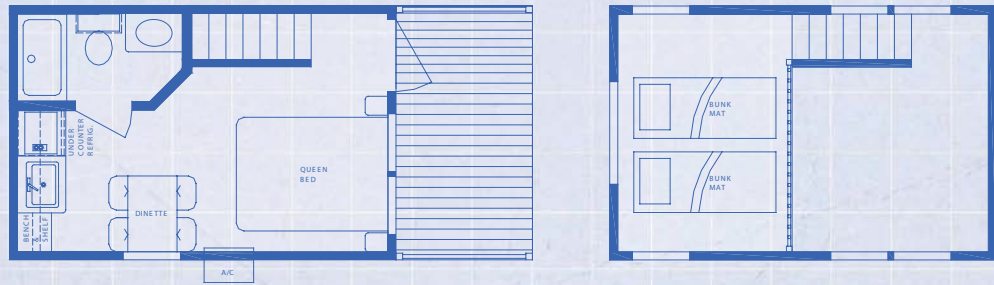
Sleeps  
4

CC-15FP



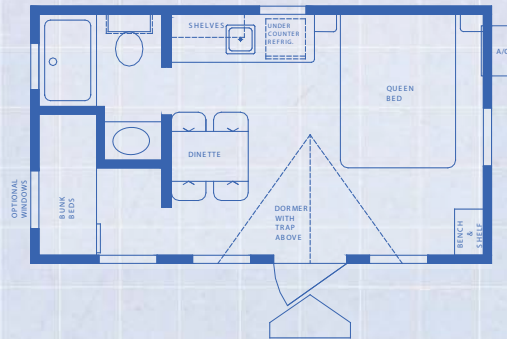
Sleeps  
4

CC-17FPL



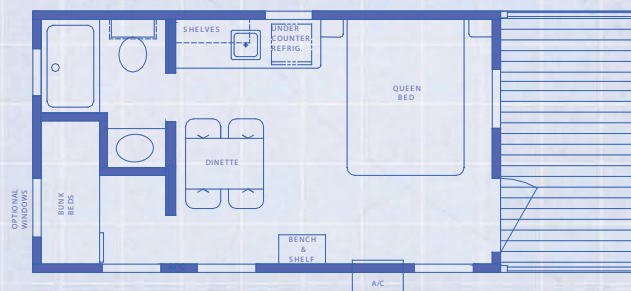
Sleeps  
4

CC-20S



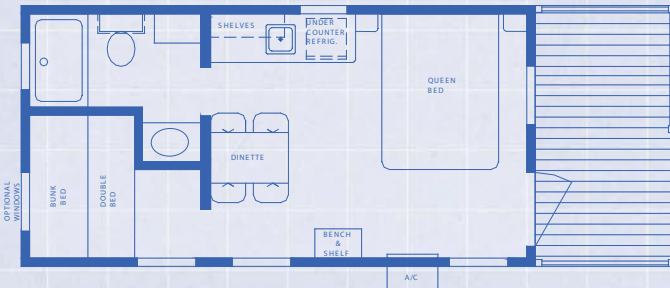
Sleeps  
4

CC-20FP



Sleeps  
5

CC-22FP



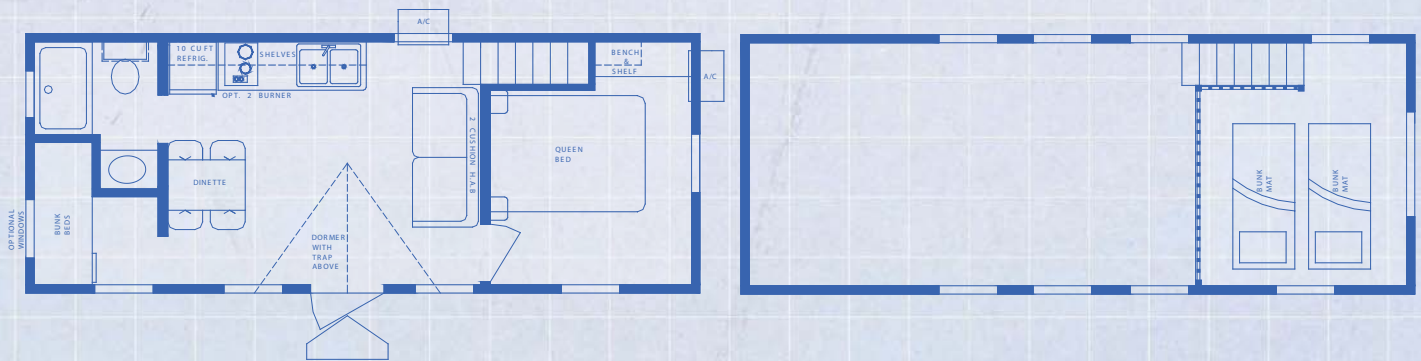
Sleeps  
6

CC-29S



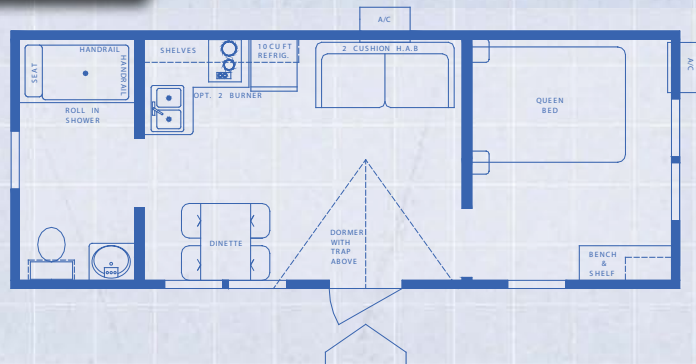
Sleeps  
8

CC-29SL



Sleeps  
4

(wheelchair accessible) CC-29SH



# Floor Plans

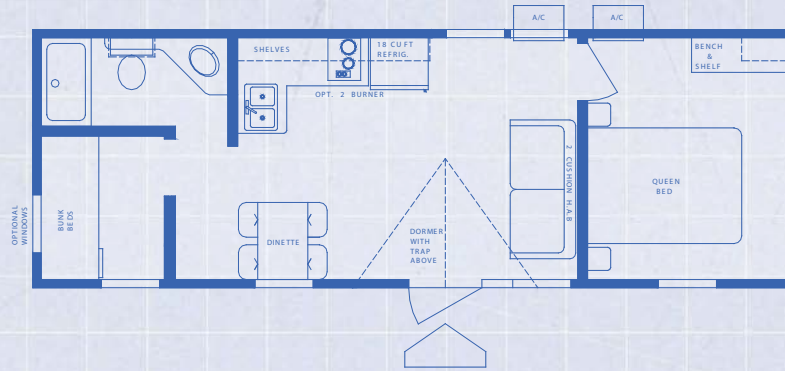
Sleeps  
6

CC-33FPL



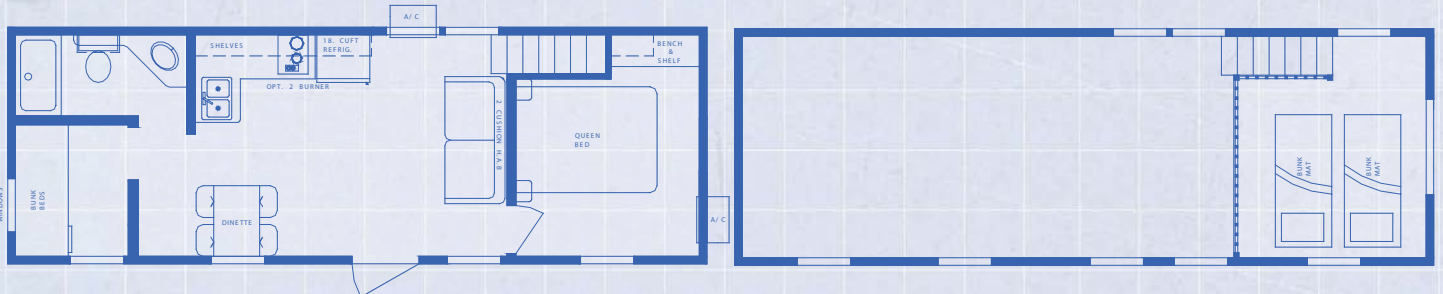
Sleeps  
6

CC-33S



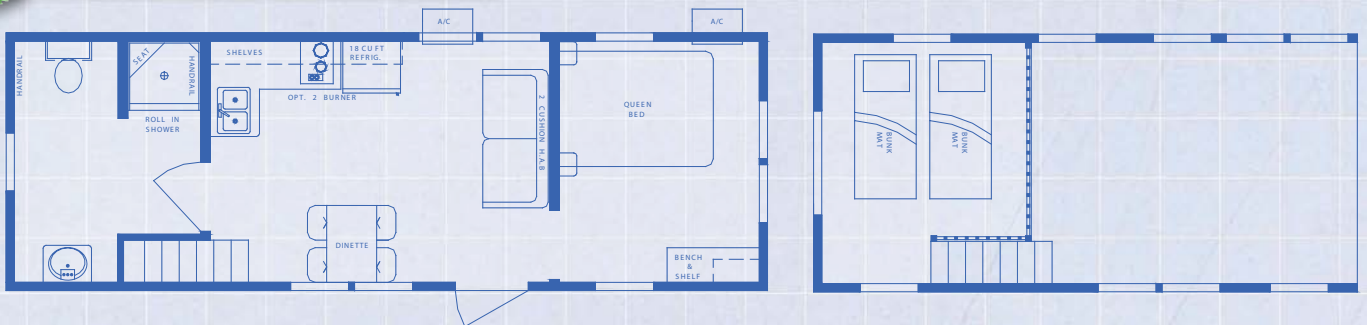
Sleeps  
8

CC-33SL



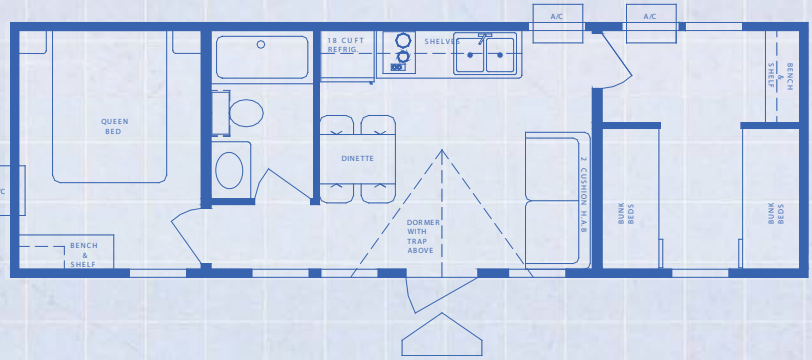
Sleeps  
6

(wheelchair accessible) CC-33SHL



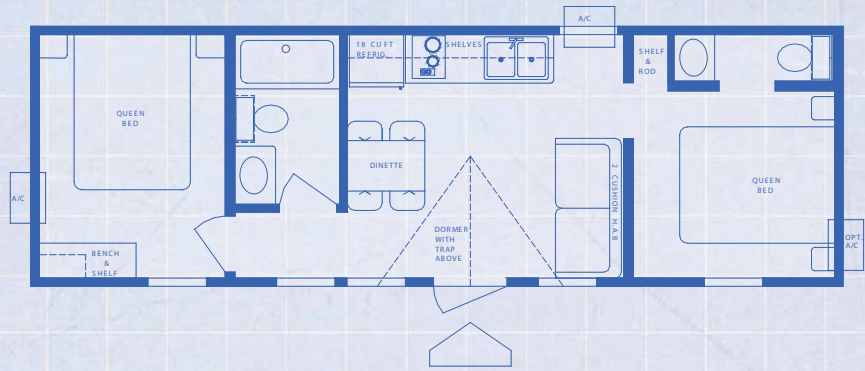
Sleeps  
8

CC-35SBUNK



Sleeps  
6

CC-35S-B1/2



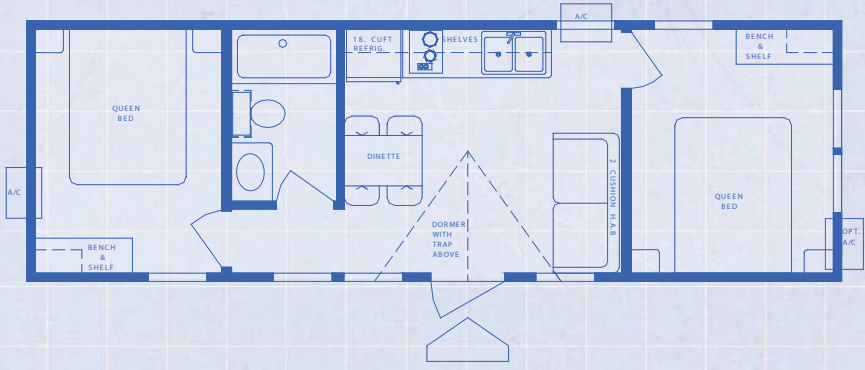
Sleeps  
8

CC-35SL



Sleeps  
6

CC-35S-2BR



# Comfort with character.

## Interior

1. Solid Pine Interior Passage/ Pocket Doors
2. 90" Sidewall Height
3. 1" x 6" T&G Pine Walls/Ceiling
4. 1" Pine Trim
5. Cathedral Ceilings
6. 2" White Faux Wood Window Blinds
7. Beauflor Vinyl Woodgrain Flooring
8. Brushed Satin Fixtures
9. Prep For Wall Mount TV
10. Ceiling Fan w/Light Kit
11. Double Switches For Ceiling Fan
12. Wood Dinette Table & 4 Chairs
13. Hide-A-Bed Sofa
14. Queen Pillow Top Mattress w/Box Springs
15. 2-Bunk Mattresses

## Bathroom & Kitchen

1. Laminate Countertops w/Backsplash
2. Stainless Steel Kitchen Sink
3. Porcelain Bath Sink
4. Bath Exhaust Fan
5. Curved Shower Rod w/Curtain
6. Retractable Clothes Line
7. 1 Pc. Fiberglass Tub/Shower or Shower Stall
8. Single Lever Faucet in Kitchen & Bath
9. Double Overhead Wood Shelves in Kitchen (Overhead Cabinets Optional)
10. "Designer" Cabinet Door Pulls
11. Appliance Package

## Exterior

1. White Single Hung Vinyl Thermopane Windows w/ Low-E Dual-Glaze Glass
2. 8" Eaves
3. Green Metal Roof
4. Pre-Finished Cement Lap Siding-Mahogany Color
5. 36" White Exterior Front Door w/Internal Blind
6. Exterior GFI Receptacle

## Mechanical

1. Insulation - Floor: R-14, Walls: R-11, Roof: R-28
2. OSB Ext. Sheathing w/Housewrap
3. Water Barrier Flashing at Windows & Doors
4. Electric Baseboard Heat w/Individual Thermostats
5. 50 Amp Electrical Service w/Power Cord
6. "Rinnai" Tankless LP Gas Water Heater
7. Thru-Wall A/C Unit(s) w/Remote Control
8. Illuminated Light Switches
9. Rocker-Style Light Switches
10. Black Iron Gas Piping
11. Pex Water Lines
12. In-Line Water Shut Off Valves at Toilet & Sinks

## Construction

1. Solid Steel Dual 1-Beam Chassis
2. Detachable Hitch
3. Woven Underbelly Protection
4. 2" x 6" Floor Joists -16" O.C.
5. 2" x 4" Sidewall Studs -16" O.C.
6. T&G Plywood Floor Decking
7. Built to ANSI 119.5 Standard
8. RVIA Approved

One-piece, maintenance-free composite deck and posts



*top features*



Custom kitchen for CC-15FP floor plan



# CANTERBURY®

CANTERBURYRV.COM

574-534-0034

Built to the ANSI 119.5 Construction Standard  
All materials, colors and features are subject to availability.  
Some items shown are optional.

