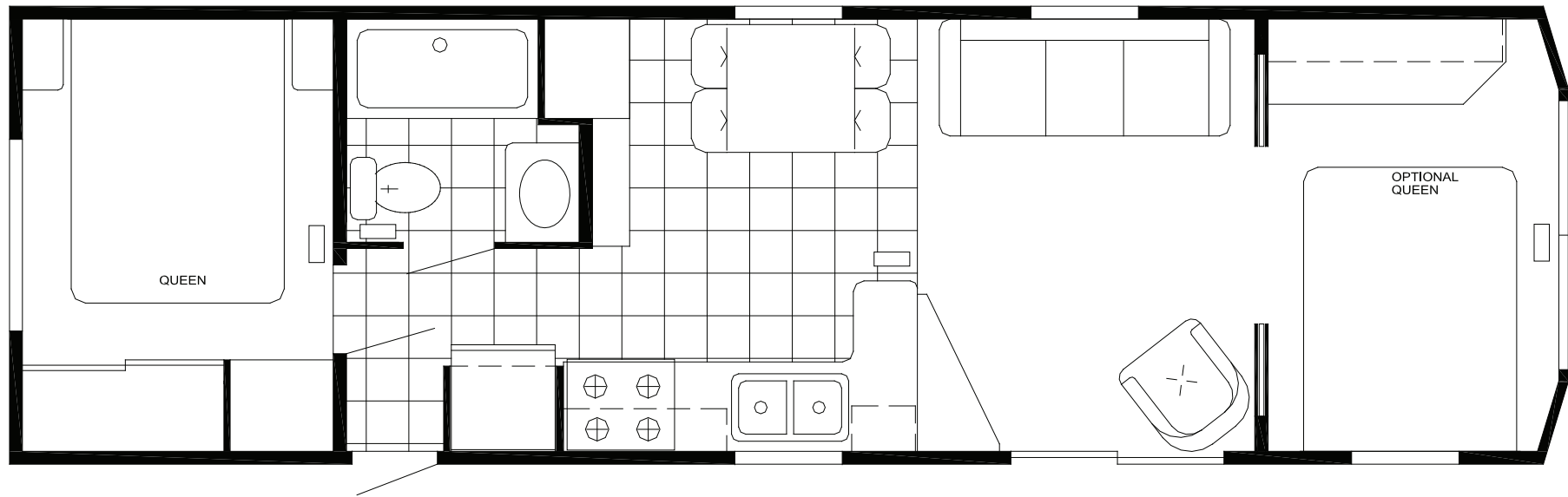


The Bayview

TWO BEDROOM | 1238-2BBV / 12' W x 36'6" L



Mechanical

- 41,000 BTU Furnace
- LP & CO Gas Detectors
- Fire Extinguisher
- 20 Gallon Electric Water Heater
- Digital Thermostat
- Ceiling Fan w/ Light

Kitchen

- Flat Panel Hardwood Cabinet Doors
- 17" CF Frost-Free Refrigerator
- 30" Deluxe Gas Range with Clock Timer
- Lighted Range Vent Hood
- Laminated Countertop

Furniture

- Residential Sofa Hide-A-Bed
- Swivel Rocker
- Dinette with 4 Chairs
- End Table with Lamp
- Therapeutic Pillow Top Queen Bed

Bathroom

- Laminated Countertops
- Power Exhaust Vent
- 1 Piece Fiberglass Tub/Shower

Interior

- Sliding Mirrored Wardrobe Doors
- Sat/Cable-Ready TV Jack in all Locations
- Chair Rail in Living Room and Dining Room
- Mini Blinds Throughout

Construction

- Asphalt Shingles
- 30 lb Rafters/R-11 Insulation
- Single Hung Vinyl Thermopane Windows with Low E Glass
- 5/8" Full Width Floor Decking
- 8" Steel I-Beam Chassis
- Thermopane Patio Door