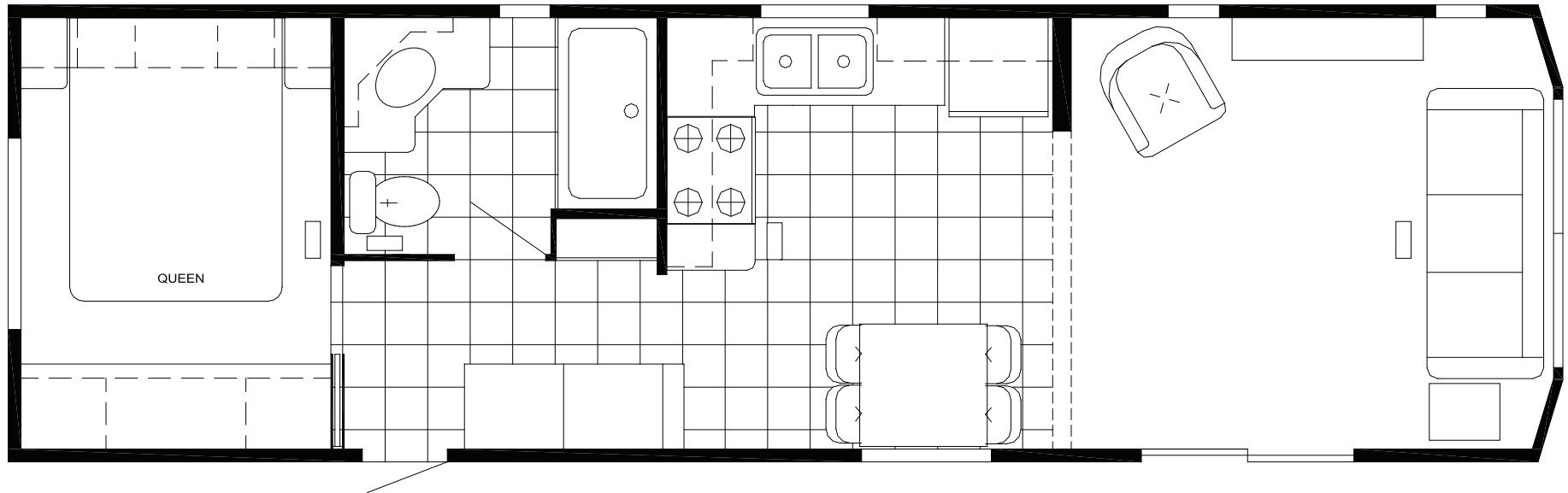


The Parkvue

FRONT LIVING ROOM | 1238-FL / 12' W x 36'6" L



Mechanical

- 20 Gallon Electric Water Heater
- LP & CO Gas Detectors
- Fire Extinguisher
- 41,000 BTU Furnace
- 50 Amp Service
- Exterior Porch Light
- Digital Thermostat

Kitchen

- Raised Panel Hardwood Cabinet Doors
- 17" CF Frost-Free Refrigerator
- 30" Deluxe Gas Range with Clock Timer
- 30" Spacemaker Microwave
- Bevel Edge Laminated Countertops with Backsplash

Furniture

- Residential Sofa Hide-A-Bed
- Swivel Rocker
- Dinette with 4 Chairs or Bar Stools
- End Table with Lamp
- Therapedic Pillow Top Queen Bed

Bathroom

- Bevel Edge Laminated Countertops with Backsplash
- Power Exhaust Vent
- 1 Piece Fiberglass Tub/Shower
- Curved Rod & Shower Curtain
- Porcelain Bath Sink

Interior

- Roller-Bearing Drawer Guides
- Decorative Vinyl Interior Panels
- Sat/Cable-Ready TV Jack in all Locations
- Entertainment Center w/ Bluetooth Sound Bar w/ Subwoofer
- Deluxe Wood Trim Package

Construction

- Seaspray Gypsum Ceiling with Vapor Barrier
- R-21 Roof / R-19 Floor Insulation
- 10-Lite Rear Door w/ Storm Door
- OSB Sheathing on Exterior Walls
- Single Hung Vinyl Thermopane Windows with Low E Glass